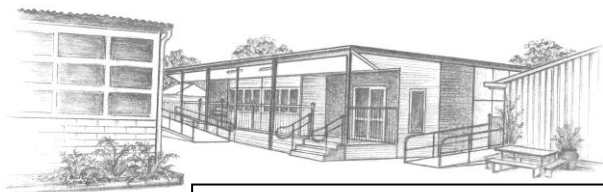


TALLYGAROPNA PRIMARY SCHOOL NO.3067



TERM 2 NO. 17 9th June 2015



Victoria Street, Tallygaropna

Phone 03 58298264

Fax 03 58298244

tallygaropna.ps@edumail.vic.gov.au

Website - <http://www.tally-ps-3067.vic.edu.au/>

Mobile 0403625625 / 0411960164

Facebook Page - [Click here](#)

SCHOOL VALUES - RESPECT, HONESTY & INCLUSION

News from the Principal's Desk

Hi everyone,

So far, we have had a fantastic response to the introduction of school beanies for the colder months. We have had to order some more red and green beanies and these are available again for sale at \$10 per item (one size fits all). Thanks again to our wonderful uniform coordinator for organising this addition to our current school uniforms.

In this edition of the newsletter, there are some important items relating to current and future excursions, so please read these carefully. Some information is also provided in regard to Student Reports which will go home on Monday 22nd June and the Student Led Conference Day which is on Thursday 25th June. Last Thursday night, the times for this day went on Tiqbiz and they are now filling fast. Please have a look at what times are still available on this day on Tiqbiz and get in quick to avoid disappointment. As always, some times may not suit families so we are always happy to make another appointment to discuss your child's progress. This mid-year discussion is essential to setting goals and target for the rest of the year and maintaining a positive relationship between school and home.

You will notice in this edition of the newsletter that there is a welfare item which is provided by our School Welfare Worker, Jade Forman. I recommend that everyone reads these articles (Want to raise a happy, healthy and well-behaved child??) to get tips in regard to supporting our kids. Mrs Forman has had informal interviews and chats with all the students of the school and it has been wonderful to see some parents make some appointments to see Jade as well.

Finally, I would personally like to thank the parents who helped out with the catering night for the ball on Saturday night. Unfortunately, I was unable to attend but by all reports it was a successful night. Our parents are a key component to our wonderful small school and I continue to be inspired by the way that they help out in any way. This may involve listening to reading, helping out with special events (ie: Mother's Day) or by assisting with Munch N Crunch lunches. I know the staff and children of the school really appreciate your support.

A reminder that Karen will away from school for 2 more weeks. Thanks to everyone for being so supportive and patient during this time, so that normal classroom activities are not disrupted too much. I look forward to catching up with some parents at School Council on Wednesday night.

David Brodie (Teaching Principal)

NEXT WEEK WILL BE A MINI NEWSLETTER EDITION. THIS WILL BE PUT ON TIQBIZ AND OUR SCHOOL WEBSITE.

THE NEXT PLAYGROUP WILL BE HELD ON THURSDAY 18th JUNE. EVERYONE IS WELCOME TO COME ALONG FOR A CHAT.

SCHOOL TRIVIA NIGHT

Saturday 1st August

10 per table

\$120 per table

\$15 a head if you cannot fill your table

Bar facilities available.

Bring your own nibbles

7.30pm for 8pm start.

Adults only night - R Rated

Nev Montgomery - host

REMINDER – PERMISSION FORMS

Eastbank Performance T2 (\$6)

Eastbank Performance T3 (\$6)

Region Cross Country (17th June) \$8

Cluster Performance - Hercules (\$8)

Life Ed. Van (\$4)

Expres. of Interest (Grade 3/4 Camp) - N/A

Dance Festival (\$4)

A Brochure and Enrolment Form for Outside School Hours Care can be collected from the office. This must be filled in by all families before being enrolled in this program.

These 2 documents can be downloaded from our school website - [here](#)

IF YOU ARE HAPPY TO GET THE LARGE NEWSLETTER EMAILED TO YOU EVERY FORTNIGHT PLEASE CONTACT THE OFFICE.

OUR PIRATE DAY WILL BE HELD ON FRIDAY 12TH JUNE. START LOOKING FOR THOSE COSTUMES EVERYONE. THIS DAY WILL BE ORGANISED BY JSC.

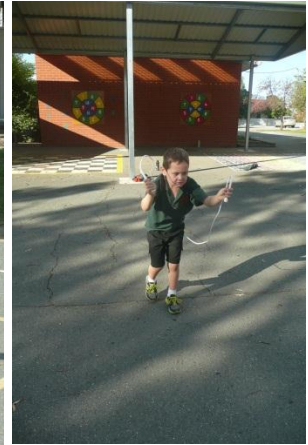
Photos of the Week – Life Ed. Van



Photos of the Week – Division Cross Country School Reps



Photos of the Week – Jump Off Day



SPONSOR FORMS HAVE BEEN EXTENDED – THESE ARE NOW DUE TO BE RETURNED TO SCHOOL BY MONDAY 22ND JUNE. LOTS OF GREAT PRIZES CAN BE WON.

STUDENTS OF THE WEEK – Term 2 / Week 7

All students received a certificate and also a free icy pole voucher to use this term.

**Foundation / Grade 1
The Brilliant Bears
Jimmy**

Jimmy for the persistence he displays in his work. We really like the neat handwriting Jimmy does and the way he tries hard at his spelling. Well done Jimmy!

**Grade 2/3/4
Mrs H's Marshmallow Monsters
Liv & Daniel**

Liv for the impressive work she puts into her schoolwork. Daniel for being so very helpful in the classroom last week & for all the awesome Math work he has been doing.

**Grade 5/6
The Tally Terrors
Kyle**

Kyle for the high standard of work that he has set so far this year with spelling and Maths. Keep up the great work.

Values Vault Winner for Week 7 was Mathew

All students received a certificate and also a free icy pole voucher to use this term.

Foundation / Grade 1
The Brilliant Bears
Nate



Nate for the confidence he shows in his reading. Nate has started reading Zac Power books and he is really enjoying them. Well done Nate.

Grade 2/3/4
Mrs H's Marshmallow Monsters
Mathew & Tomas



Mathew for the persistence he showed in getting a Mathletics certificate last week also for being the first one finishing his work in class. A fine effort Matty!
Tomas for using excellent manners to a parent & for being the first person to get a Mathletics certificate last week. I also like how you were sounding out your words when writing. Well done!

Grade 5/6
The Tally Terrors
Bailey



Bailey for her great work habits in and out of the classroom and for her dedication for trying to always improve on her work. Great effort!

1. Camps, Sports & Excursions Fund - reminder

The Victorian Government has announced \$148.3 million over four years for the Camps, Sports and Excursions Fund (CSEF), to ensure all eligible students are able to participate in school trips and sporting activities. Families holding a valid means-tested concession card will be eligible to apply. A payment of \$125 for primary school students will be paid directly to the school to be used towards camps, sports and excursion costs for the benefit of the student. Contact the school office to obtain a CSEF application form or download from www.education.vic.gov.au/csef

2. Winter Uniforms (Beanies)

We have had a fantastic response to the beanies and these are selling like hot cakes! We now have restocked RED and BOTTLE GREEN beanies for sale. \$10 one size fits all. These beanies are part of our school uniform and no other hats can be worn by students during the colder months of the school year.

3. School Mate App

The Department of Education and Training has released an app which is designed to help you better understand the curriculum we use to teach your children every day. The app, called **SchoolMate**, is available for free download now in the App Store for iPhones and iPads and in Google Play for Android phones and tablets. SchoolMate gives you a general overview of the Victorian curriculum in each subject at each year.

Educators from across the state from Victoria's various teaching associations have worked with the Department to provide practical tips about what you can do at home to best support what your children are learning. Those teaching experts have also suggested books you may like to read with your child or that they may read themselves, and apps you can download that are related to what your child is learning. Our school, like all other government schools in Victoria, uses AusVELS – the Australian Curriculum in Victoria – as the basis for the learning programs we run at school every day. Our teachers adapt the curriculum to meet the needs of our students and community, for example, designing learning programs around what your children are interested in, or around days or celebrations that are important to our community.

SchoolMate is designed to give you an overview of what children are expected to learn in Victorian government schools across every subject from Prep to Year 10. We encourage you to download SchoolMate and to please talk with your teacher if you are interested to find out more about how our school teaches the curriculum. As SchoolMate is the first app of its kind, the Department would love to hear any feedback you have, and you can send this to online.comms.unit@edumail.vic.gov.au. Feedback from parents and schools will inform any future updates to SchoolMate, so please get in touch if you have the time.



4. Movie Night

This is scheduled for Thursday 16th July from 6pm until 8.30pm and this fun night links strongly with our Kidsmatter initiative which focuses on community involvement. This community night will involve tea and a movie for the students of the school. All students can come in their warm PJ's and are encouraged to bring along a bean bag and rug to sit in. They can also bring their teddies as well – dressing gowns are encouraged. A tea order / permission form will go home before the holidays to assist with catering and siblings are welcome to attend. All students who attend the movie night must be supervised by their parents. Mum's and Dad's are welcome to bring a long a few drinks to share on the night while the kids enjoy the movie night. The Parents Club will hold a brief and informal meeting on this night as well.

5. Dance Festival

On Tuesday 23rd June, students in Grades 3-6, along with some Grade 2 students will attend the Dance Festival at the Shepparton Basketball Stadium. We will leave school at 1pm and then travel into Shepparton by bus. The festival begins at 1.30pm and concludes at 2.45pm. We should return back to school by about 3.15pm. **Permission forms must be returned and the cost for the day will be \$4 to cover the program and cost of the bus.** Parents are welcome to come along if they wish and attend the festival – just let us know if you would like to get on the bus.

There is an expectation that all of the students attend this day. Any queries contact Mr Brodie please.

6. Interschool Sport

Our school will be participating in Interschool Sport in Shepparton and Mooroopna on Friday 24th July. We anticipate sending teams for Football and Netball. In the past, we have combined with Congupna PS to form a football team. This may occur with our own netball team. At this stage, Mrs Haberfield will probably coach the netball team and we hope that Mr Pettigrew from Congupna PS will be able to coach the football team. This will allow for Mr Brodie to float between the two venues. If any parents can assist in any way it would be greatly appreciated. More details will be available early next term, but there is a strong possibility that some Grade 3 or 4 children may be able to participate as well to help with fielding teams – random draws.

7. School Reports

School Reports will go home to families in sealed envelopes on Monday 22nd June. Teachers spend a huge amount of time completing assessments and writing written comments so please read these carefully in preparation for the Student Led Conferences which will be held on Thursday 25th June. The aim of this day is to give all students an opportunity to discuss their progress so far at school with staff and families. **Therefore, students will be required at school only for the duration of their interview** (family arrangements will need to be made). This day links to our Kidsmatter theme and allows us to continue to build on the relationship which is necessary for both staff and parents. We hope to see all children attend this day. If this day does not suit, an alternative arrangement may be made.

What exactly do the A-E ratings mean?

A indicates achievement that is **above the standard expected** for your child's year level at the time of reporting (12 months or more ahead of the standard expected at the time of reporting)

B indicates achievement that is **above the standard expected** for your child's year level at the time of reporting. It means that your child understands more complex ideas and has a broader range of skills than would normally be expected.

C indicates achievement that is **at the standard expected** for your child's year level at the time of reporting. It means that your child's learning is on track and that they understand and can apply the range of skills and knowledge expected for their year level at the time of reporting.

D indicates achievement that is **below the standard expected** for your child's year level at the time of reporting. It means that there are some skills and knowledge that your child has yet to acquire before they can be said to be achieving at the expected standard.

E indicates achievement that is **well below the standard expected** for your child's year level at the time of reporting. It means there are significant areas of knowledge and skills your child needs to acquire before they can be said to be achieving at the expected standard.

Isn't a 'C' a disappointing result?

No it is not at all. It is important to remember that if your child receives a 'C' on the report card it indicates that their *learning is on track* and they are achieving the statewide standard that *is expected of them* at the time of reporting.

In the past, a 'C' in some schools might have meant that the child was performing below the expected standard. This is no longer the case.

8. School Council

School Council will be held this Wednesday with Finance beginning at 6.45pm. School Council will follow as per normal at 7.30pm.

9. Mrs Armstrong – Long Service Leave

Mrs Armstrong will continue to take 2 more weeks Long Service Leave and will resume her duties at school on Monday 22nd June. A big thankyou to all families for being so respectful during this period and for not interrupting normal classroom programs too much. Your support is really appreciated.

10. Sight Words – Tiqbiz

Part of our schools whole school literacy plan involves setting some targets for our children. Therefore, we have developed some sight words which are used for these targets and parents may wish to reinforce these at home as much as possible. All of these lists have been put on Tiqbiz and can be downloaded if needed. Feel free to contact class teachers if you need some clarification in relation to this.

Specific targets are summarised below:

Reading

- At end of Foundation students will have a minimum 25 automatically recalled sight words.
- At end of Grade 1 students will have a bank of 150 automatically recalled sight words.
- At end of Grade 2 students will have a bank of 300 automatically recalled sight words.
- At end of Grade 3 students will have a bank of 500 automatically recalled sight words.
- At end of Grade 4 students will have a bank of 750 automatically recalled sight words.
- At end of Grade 5 students will have a bank of 1000 automatically recalled sight words.
- At end of Grade 6 students will have a bank of 1500 automatically recalled sight words.

Spelling

- At end of **Year 1**: 90% of students to know how to spell 50% of Tally Sight Words 100
- At end of **Year 2**: 90% of students to know how to spell 100% of Tally Sight Words 100
- At end of **Year 3**: 90% of students to know how to spell 50% of Tally Sight Words 200
- At end of **Year 4**: 90% of students to know how to spell 100% of Tally Sight Words 200
- At end of **Year 5**: 90% of students to know how to spell 100% of Tally Sight Words 300
- At end of **Year 6**: 90% of students to know how to spell 100% of Tally Sight Words 400

11. Open Days

Open Days for potential new families are attached again to this newsletter. This information has been put on Tiqbiz and also on our School Facebook site and it would be appreciated if our families could let people know of these dates (June 4th and 18th). Alternative dates can be made if these 2 dates don't suit possible new families for 2016.

12. Pirate Day - JSC

This fun dress up day is planned to be held on Friday 12th June so start hunting for those costumes. This day will be organised by JSC and Mrs Wallace and some fun activities will be planned for this day.

13. Grade 5/6

The Big Spelling Test will be held on Wednesday 24th June, so hopefully students have put in some preparation in relation to this. The Term 2 reward day will be held on Friday 26th June. Students have been working on gaining some points in regard to participating in this.

14. Resource Smart / Building & Ground Committee

If any parents are interested in being on this committee could you contact David or Karen at school please. We are looking forward to implementing some recommendations from our Biodiversity and Energy Audit and parent input would be welcomed.

15. Thank you - Helpers for Ball

A big thank you to our wonderful helpers who assisted at the ball on Saturday night. Your support is greatly appreciated.

16. School Performances

A huge thank you to the Parents Club who have agreed to fund \$4 for each of the 2 shows below. Therefore, the cost for each show is now only \$6 for each student. Payments can be made now, but these are not due until the end of May.

Show 1 (Term 2) – Wed 17th June (1.30 – 2.30pm)

Title: Roald Dahl's Revolting Rhymes & Dirty Beasts
Art Form: Drama / Comedy

Show 2 (Term 3) – Thur 23rd July (11.30am – 12.30pm)

Title: The Gruffalo's Child
Art Form: Physical Theatre, Music, Puppetry

17. Sporting Schools Program

The following sessions are remaining for our After School sports for Term 2. We hope to finalise details for the sport programs for Term 3 before the holiday break. All sessions begin at 3.35pm and students receive a healthy snack before the programs begin. Sessions finish at 4.35pm and all students need to be picked up immediately after each session.

AFL Monday 15 th June Monday 22 nd June	Golf Tuesday 16 th June Tuesday 23 rd June
---	--

18. Outside School Hours Care

OSH Care (Outside School Hours Care) continues this Wednesday, Thursday and Friday in the Multi-Purpose Room. Each session begins at 3.25pm and concludes at 6pm. Specific information is available at the website below and prices are summarised below as well:

Website - <http://www.tally-ps-3067.vic.edu.au/page/176/Outside-School-Hours-Care>

Permanent Enrolment \$18

Casual Enrolment \$20

If collected before 4.30pm \$11

ENROLMENT FORMS MUST BE RETURNED FOR EACH STUDENT BEFORE THEY CAN PARTICIPATE IN THIS PROGRAM AFTER SCHOOL HOURS – WEDNESDAY, THURSDAY AND FRIDAY.



TALLYGAROPNA PRIMARY SCHOOL PRIDES ITSELF ON BEING A COMMUNITY SCHOOL

Fairleys Supa IGA Community Rewards Program

Our school has registered for the Fairleys Supa IGA Community Rewards program. Families can register in-store. Funds generated by customer point donations are converted to cash and handed over at the end of the financial year.



Want to raise a happy, healthy and well-behaved child??

Well, it all starts with building a positive relationship!

Some key ingredients to RELATIONSHIP is:

- Read to your child and have them read to you
- Eat together - It's always nice to make time to share a meal. You could even get them involved in the preparation!
- Love- This can be shown through words and actions
- Attachment- Having a close bond with your child will enhance their wellbeing and also make them much more likely to respond to discipline
- Talk- Whether you're in the car, washing the dishes or putting them to bed; there are always opportunities to talk to your child
- Include them- We all have daily tasks to get done which can be mundane but it's a great chance to involve your child, to possibly teach them a new skill, have a chance to talk and build relationship!
- Open up to them- Whilst you probably ask your child a lot about themselves, it's great for them to get to know more about you. Tell them some of your memories of when you were young, things you like to do or how you might be feeling today
- Never put them down. Kids can be very sensitive and often take words to heart. When using discipline, remember to focus on the behavior you don't like rather than making the child feel like it is 'them' that you don't like. As their parents, we are the most influential people in their lives, so a kind word can really brighten their day
- Spend time- Just being in the same room watching television may not be considered quality time. Do fun activities together. Kids get a lot more out of the time spent with their parents than the material gifts they are given
- Help them- Your children might like you to help them out with things like their reading, spelling or cleaning their room but you might also like to choose a project together like create a vegetable patch, build a cubby, put up a tent and create an imaginary castle
- Initiate conversation- Some children don't talk much and might need a little encouragement to find out how they feel or what they have been up to
- Praise- Give plenty of encouragement to your child to boost their self esteem

Open Day

Tallygaroopna PS

For prospective families

Thursday 4th and 18th June



Tours of the school available from

9.30am until 11am

School Packages are available on the day.
These include enrolment forms, information
booklets...etc

Come along and have an informal chat with
staff, a cuppa and some morning tea.

Phone 58298264 for more information

Camps, Sports & Excursions Fund (CSEF)

Every Victorian child should have access to the world of learning opportunities that exist beyond the classroom. The Camps, Sports and Excursions Fund will ensure that no student will miss out on the opportunity to join their classmates for important, educational and fun activities.

School **camps** provide children with inspiring experiences in the great outdoors, **excursions** encourage a deeper understanding of how the world works and **sports** teach teamwork, discipline and leadership. All are part of a healthy curriculum.

CSEF will be provided by the Victorian Government to assist eligible families to cover the costs of school trips, camps and sporting activities.

If you hold a valid means-tested concession card or are a temporary foster parent, you may be eligible for CSEF. The allowance will be paid to the school to use towards expenses relating to camps, excursions, or sporting activities for the benefit of your child.

The annual CSEF amount per student will be:

- \$125 for primary school students
- \$225 for secondary school students.

How to Apply

Contact the school office to obtain a CSEF application form or download from www.education.vic.gov.au/csef

Closing Date

You should lodge a CSEF application form at the school by 26 June 2015.

For more information about the CSEF visit www.education.vic.gov.au/csef



Parent/Teacher Interviews (Student Led Conferences)



Parent/Teacher Interviews will be held on Thursday, 25th June starting at 9am and concluding at 5pm. Please indicate on the form below what time suits you. Times will be allocated on a first in first preference basis. If the times do not suit you, please contact the school to make an alternate arrangement.

✂.....

NAME:.....

Yes I/we would like to attend the parent/teacher/student interview session with you on Thursday, 25th June.

My preferred time isam/pm.

AVAILABLE ON TIQBIZ



We will do better for young people
by working strategically together.

**SHEPPARTON & DISTRICT SCHOOL BUS NETWORK
SCHOOL BUS PROGRAM - Country (out of town) Year 7 Students 2016**

Dear Parent/Guardian,

The School Bus Program assists families in rural and regional Victoria by transporting students to school. Categories of eligibility determine whether a student travels at no cost or travels upon payment of a fare.

To be eligible for travel on a school bus at no cost government school students must attend their closest government school, while non government school students must attend their closest appropriate school, which is determined by the denomination of the school.

2016 Year 7 government and non government students not attending their closest appropriate school will be required to pay a fare in advance of each term as set by PTV (Public Transport Victoria).

The amount of the fare is determined by the distance from the front gate of the home to the school the student is attending. The schedule of fares (as at June 2015 & subject to change) is as follows:

1-10 km	\$120 per term	17- 20 km	\$230 per term
11- 12 km	\$140 per term	21 - 30 km	\$240 per term
13 - 14 km	\$180 per term	31 - 40 km	\$280 per term
15 - 16 km	\$200 per term	41 km >	\$310 per term.

Payment of fares is required before the start of each school term in order for the student to have access to a seat on the school bus. Please note that students who are selected in the McGuire College SEAL program are exempted from paying fares and are eligible for free bus travel.

Determination of any fare payable will be made after submission of the school bus application form (available from Primary Schools in Term 3) to the Shepparton & District School Bus Coordinator. Parents/Guardians will be notified by letter of the outcome of their application. Further information is available from the Shepparton & District School Bus Coordinator at Mooroopna Secondary College.

Paul Lucas (Shepparton & District School Bus Program Coordinator, Phone 58252344)

Shepparton High School
Phone: 03 5821 4322
Principal Phil Squire
squire.phil@edumail.vic.gov.au

McGuire College
Phone: 03 5858 9800
Principal Jan Gregory
gregory.jen.j@edumail.vic.gov.au

Mooroopna Secondary College
Phone: 03 5825 2344
Principal Gary Fletcher
fletcher.gary.w@edumail.vic.gov.au

Wanganui Park Secondary College
Phone: 03 5820 9800
Principal Ken Murray
murray.ken.j@edumail.vic.gov.au

TALLY P.S. CALENDAR – TERM 2/3 FOR 2015

Mon	Tue	Wed	Thu	Fri
1 Mini Newsletter Tradit. Games Mrs Arm. – LSL SS - AFL	2 Kinder Day Welfare Officer Life Ed. Van Placement Forms Due – Gr. 6 SS - Golf	3 OSH	4 OSH Kinder Day Library Playgroup Welfare Officer Open Day Munch N Crunch	5 OSH 6 th – Footy Ball
8 QUEEN'S BDAY HOLIDAY	9 Kinder Day Welfare Officer Newsletter SS - Golf	10 OSH Kinder Day School Council	11 OSH Kinder Day Welfare Officer Music	12 OSH Art Pirate Day - JSC
15 Mini Newsletter Tradit. Games SS - AFL	16 Kinder Day Welfare Officer Cluster Perf. SS - Golf	17 OSH Reg. C. Country Roald Dahl - Performance	18 OSH Kinder Day Library Playgroup Welfare Officer Open Day	19 OSH Music - TBC
22 Newsletter Tradit. Games Mrs Arm. – return Reports Home SS - AFL	23 Kinder Day Welfare Officer Dance Festival SS - Golf	24 OSH Kinder Day	25 OSH Kinder Day Welfare Officer Student Led Conferences	26 OSH Art End of Term 2

Mon	Tue	Wed	Thu	Fri
29	30	1	2	3
SCHOOL HOLIDAYS				
6	7	8	9	10
SCHOOL HOLIDAYS				
13 Mini Newsletter Term 3 Begins	14 Welfare Officer Kinder Day	15 OSH	16 OSH Welfare Officer Lib. / Play Group Kinder Day Movie Night	17 OSH
20 Newsletter SS – AFL (TBC) Music Welfare Officer	21 Kinder Day SS – Golf (TBC) Welfare Officer	22 OSH Kinder Day	23 OSH Kinder Day Performance	24 OSH Art Footy / Netball
27 Mini Newsletter SS – AFL (TBC) Tree Plant. - TBC	28 SS – Golf (TBC)	29 OSH	30 OSH Welfare Officer Library Playgroup Kinder Day Science Day TBC	31 OSH Welfare Officer Science Day TBC 1 st – Trivia Night

JUNE

JUNE / JULY